

Fastscan (c) 1998, 99 by Dirk Paehl

Giftwareversion

What is Giftware? Giftware means in exact words Gift Ware. So you should send me a gift, if you want to use this program. E.g. money, a self written program or whatever.

If you want to translate this manual into other languages, please send me your translated version. Then it will be integrated into the next program version and you will be mentioned here.

Address:

**Dirk Paehl
Postal office box 3720
D-38027 Braunschweig
Germany**

Homepage: <http://dpaehl.home.pages.de> or <http://dpaehl.notrix.de>
EMAIL: dpaehl@writeme.com

Once started Fastscan looks like this.

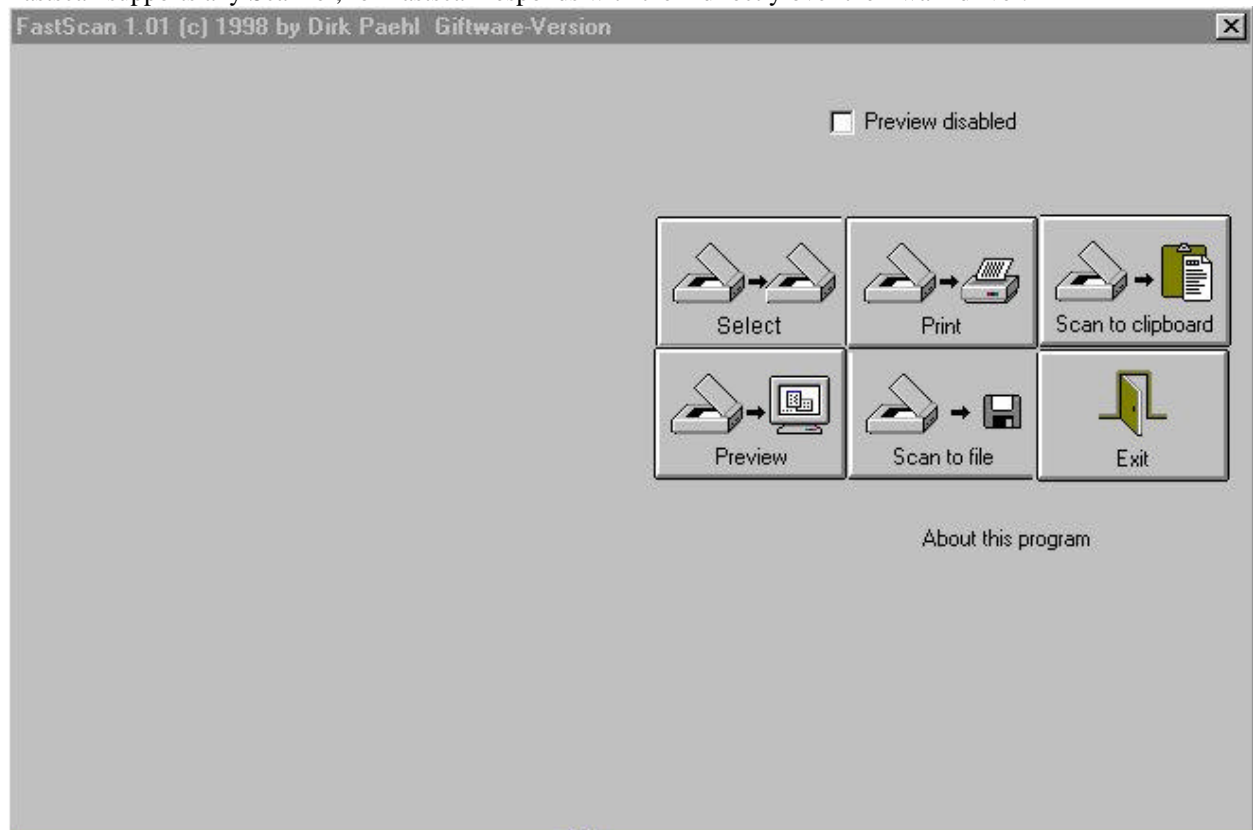
What is Fastscan? If you for example want to scan a picture and than print it, you hav'nt to open a image processing program first and ransack several menus.

Right here is Fastscan's basic approach. You e.g. want to integrate a picture into a document of a text processing program.

So simply start Fastscan, call Scan to clipboard, scan, switch to the text processing program and paste using Ctrl+V or click any Paste button. Super simple and fast.

Fastscan is a pure 32 bit program, which means it runs under Windows 95/98 and NT. Tested with Windows 95/98 and NT4.0 SP4.

Fastscan supports any Scanner, for Fastscan responds with them directly over the Twain driver.



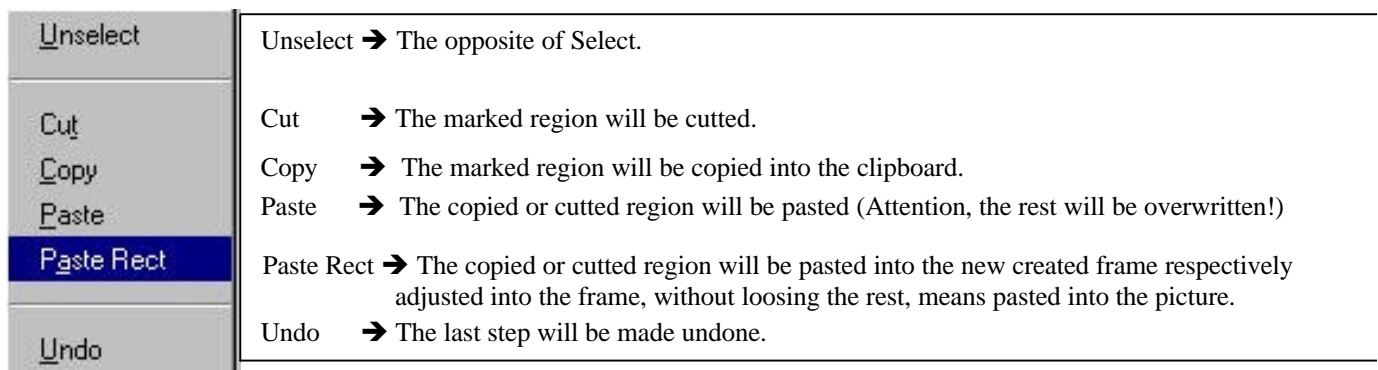
Preview



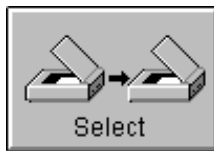
Has the scanned picture to be shown? **Preview disabled** means there will be no preview. **Preview enabled** means that the scanned picture will be shown on the left. Above **Preview enabled** there is a % sign which indicates that the picture can be zoomed.

The **Fit** switch means that the picture will be adjusted into the left window. Furthermore the picture can be "edited". Mark a region using the left mouse button and then press the right mouse button.

Now this popup menu is shown.

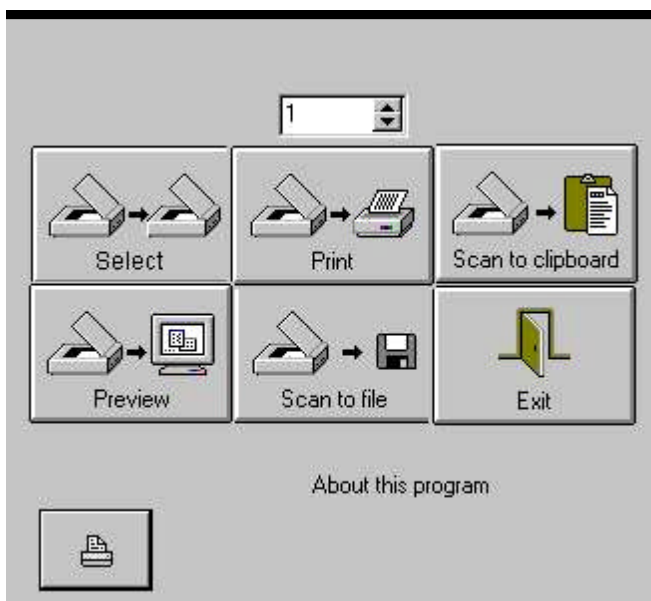


FIT means that the picture will be adjusted, so it will have the optimal size.



SELECT

Here you choose the Scanner. Under Windows 95/98 it is mostly 16 or 32 bit.



Print

Here you can print a scanned picture immediately. To print just press the lower left button. Above, where now a one is shown, you insert the number of printouts. Default is 1.

Start printing

With this button the printout will be started.

HINT: At the moment the default printer will be taken without a printer selection.

This will be changed in the next program versions. Than for example a scanned document can be faxed instantly.



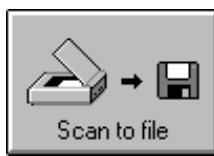
Clipboard

Here you can copy the scanned picture into the clipboard and use it everywhere.



Preview

Means the scanned picture can be viewed in a preview.

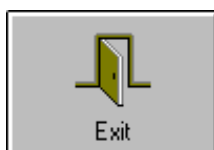


Scan to file

The scanned picture can be saved to the hard drive.

It can be saved not only as BMP (Bitmap) but also as GIF, PCX and JPG. Wow!!

Default is GIF, actually the standard format or not?????.



Exit the program

Exit the program, this has to be done sometime.

About the program

Copyright notice for this program.

Please support me. Does FASTSCAN run on your computer? What kind of scanner do you own: SCSI, Printerport or USB??? What trademark, what TWAIN VERSION and what's your used operating system?

Further helpful informations would be: SCSI CONTROLLER, ASPI DRIVER VERSION.